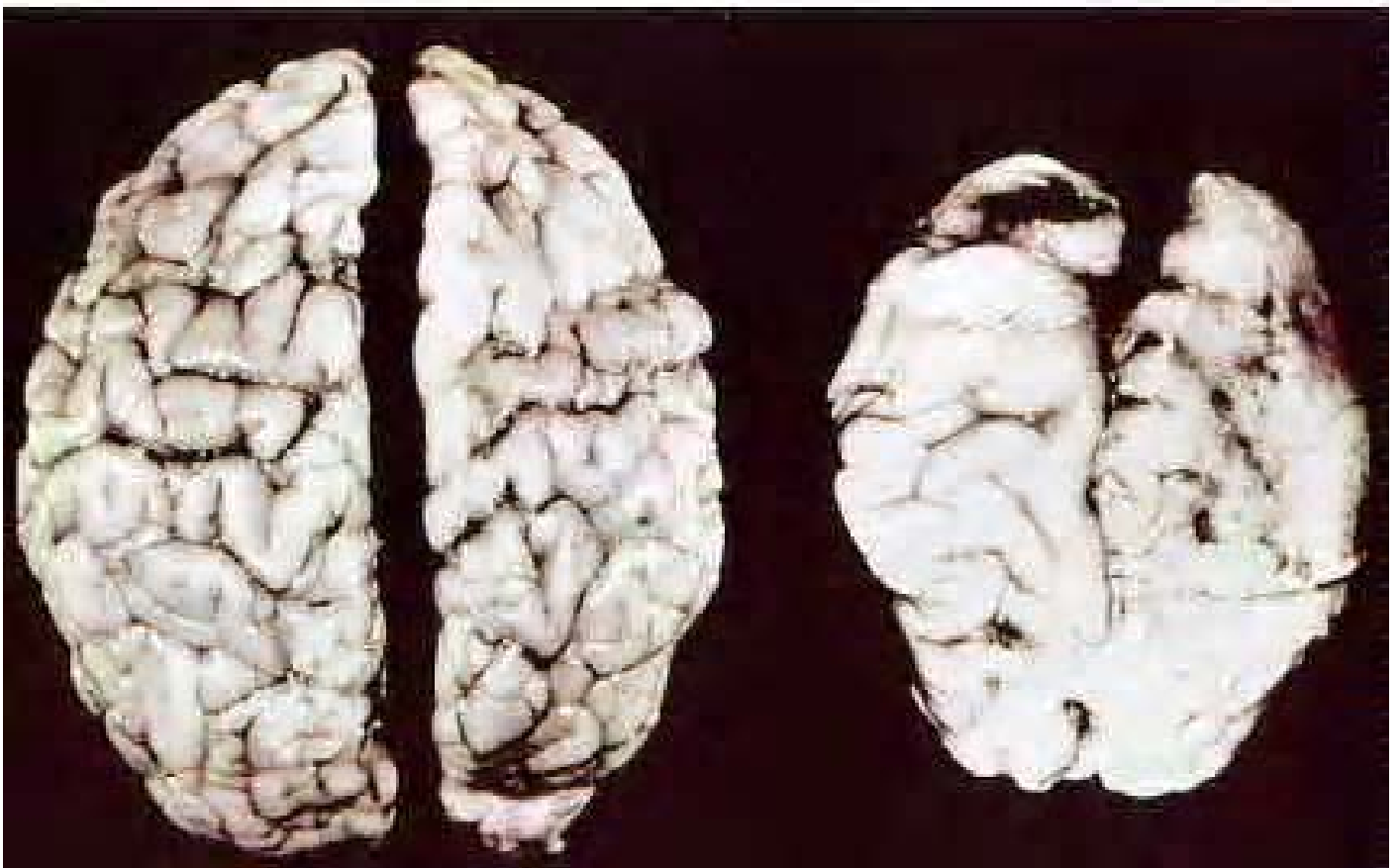


Permanent Brain Damage

**PERMANENT BRAIN DAMAGE –
A TRAGIC CONSEQUENCE of
PRENATAL ALCOHOL EXPOSURE**

**The FAS-brain
is remarkably smaller
than the normal brain
and damaged.**



Normal brain

FAS-brain

Both babies 6 weeks old